

HO TRAM

# ixora

by fusion

PHASE 2

Welcome to the excitement of Southeast Asia's biggest world class integrated resort.





Artist's Impression

Site area: 7.6ha

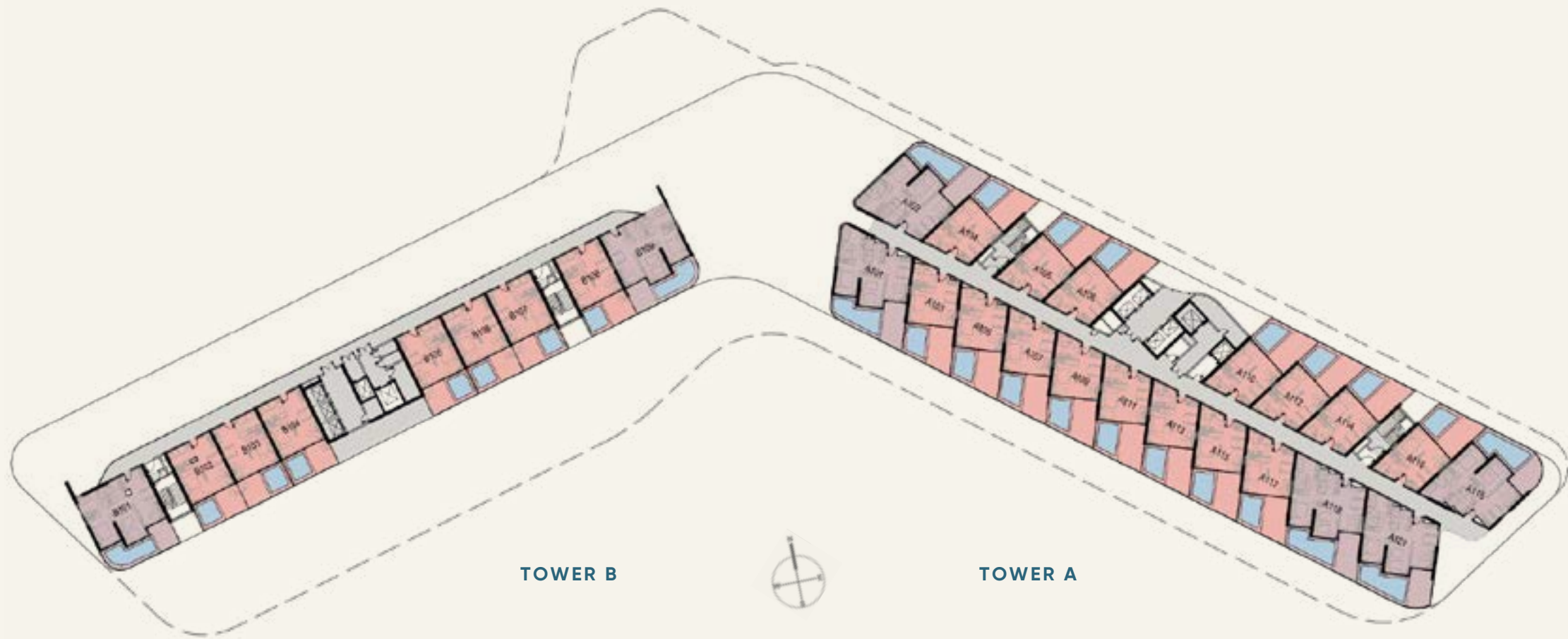
Project scale: 512 condotels  
(1BR - 2BR - Penthouse) and  
63 villas

# Your very own paradise



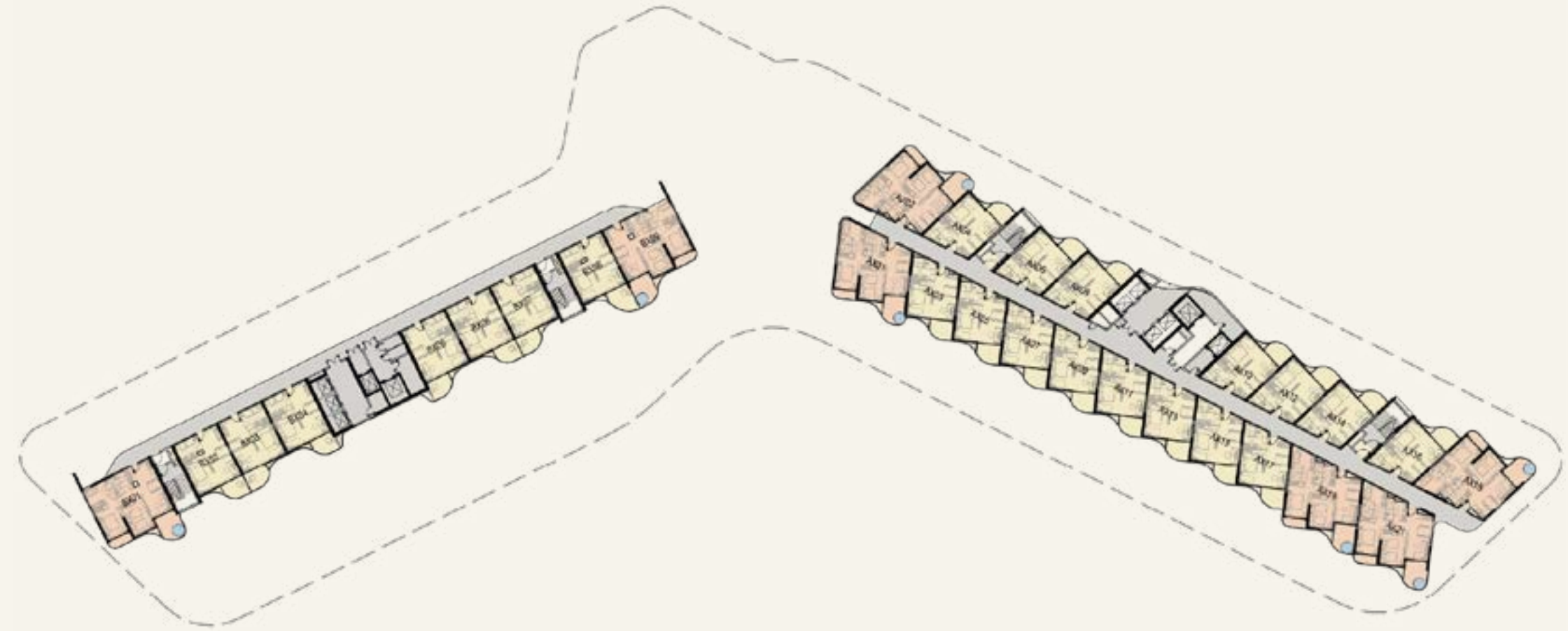
Artist's Impression

# Level 1



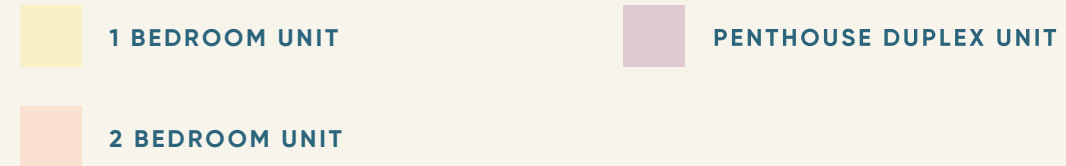
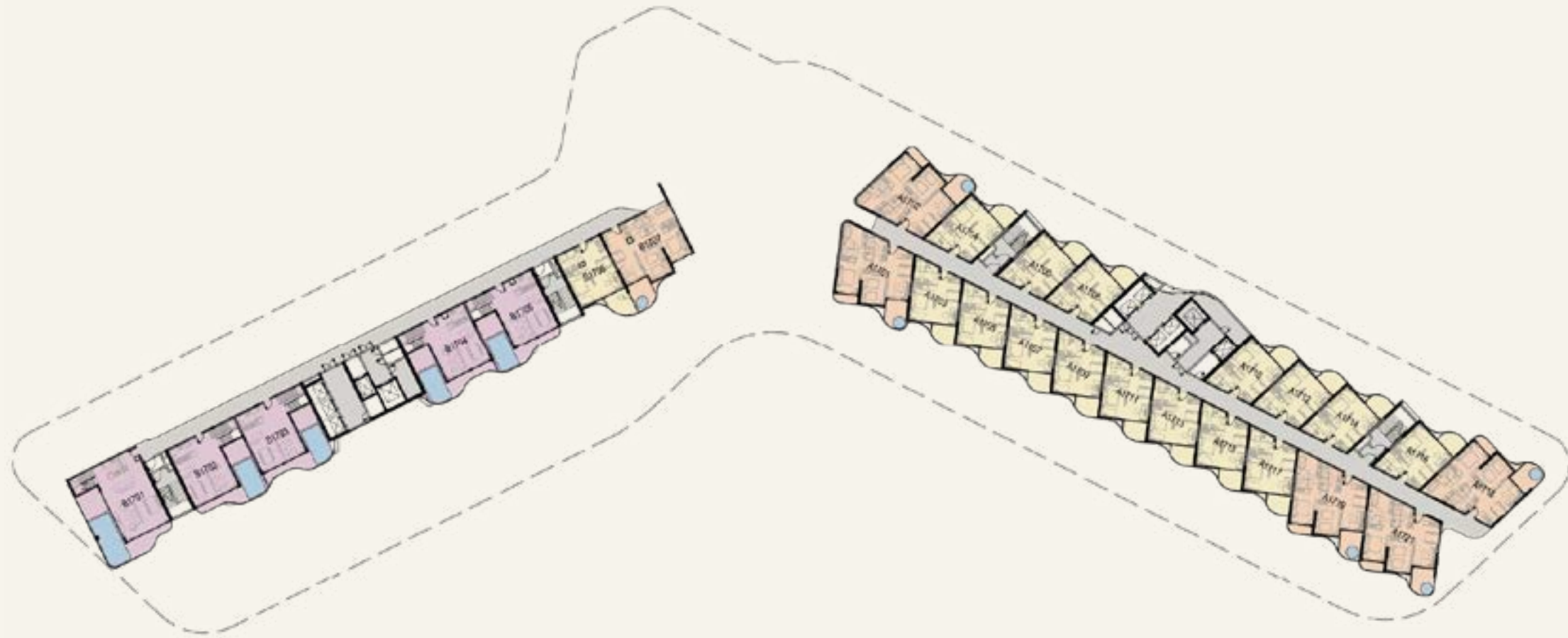
- 1 BEDROOM UNIT WITH SWIMMING POOL
- 2 BEDROOM UNIT WITH SWIMMING POOL

# Level 2 - 16



- 1 BEDROOM UNIT
- 2 BEDROOM UNIT

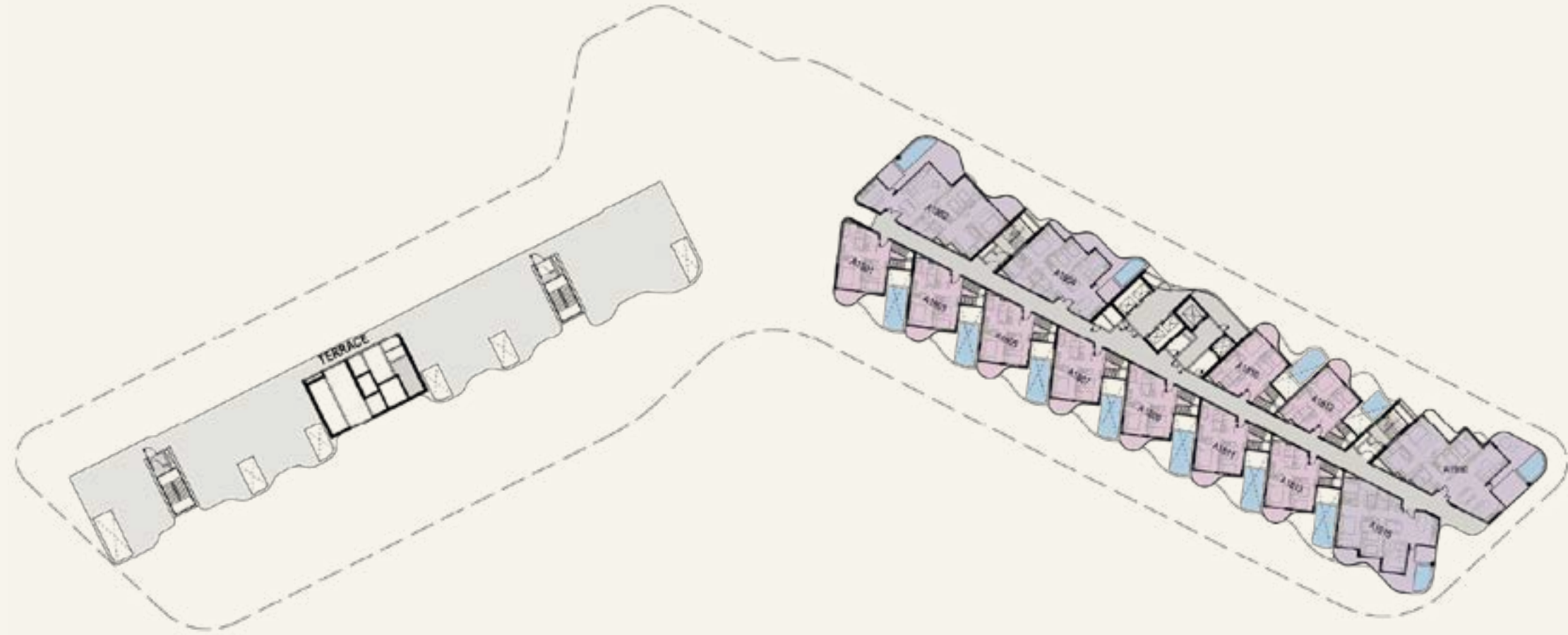
# Level 17



# Level 18



# Level 19



 PENTHOUSE DUPLEX UNIT

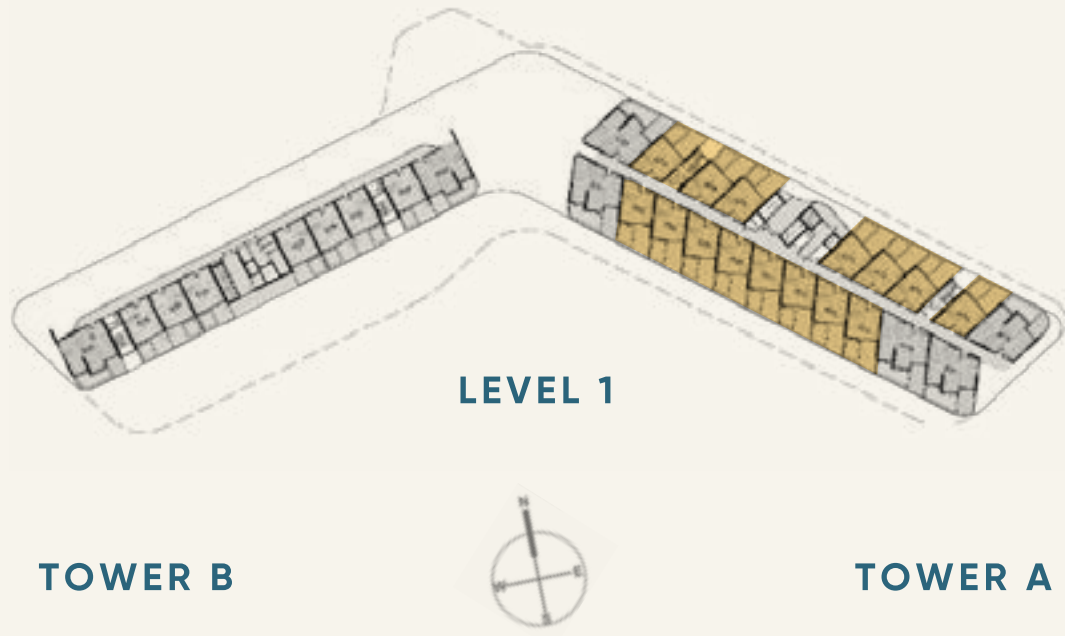
 PENTHOUSE



Artist's Impression

# 1 Bedroom Pool

**TYPE 1**

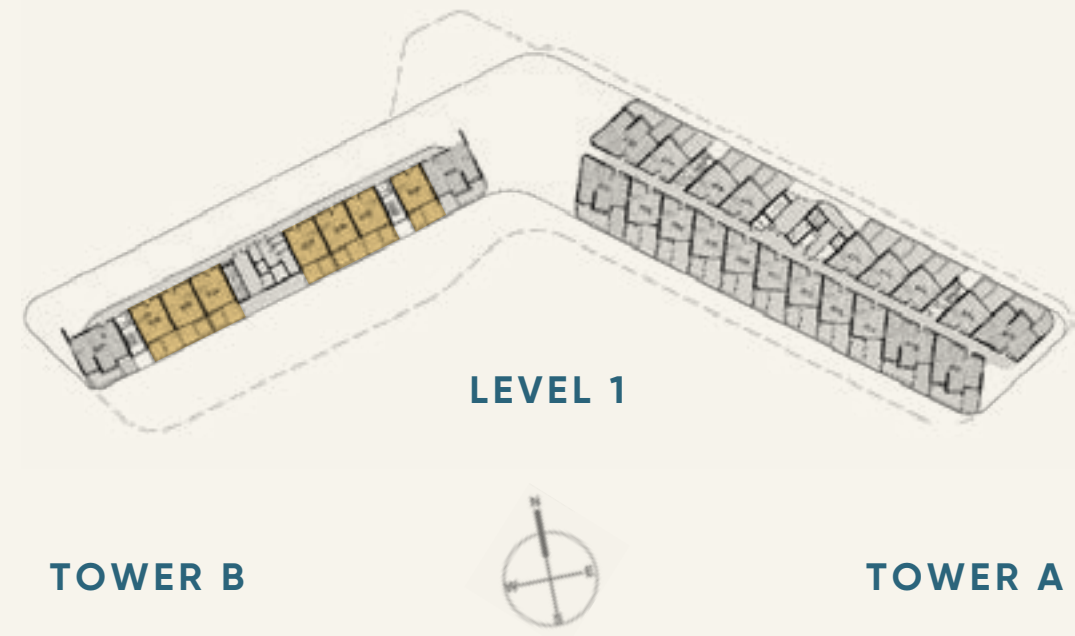


**1 BEDROOM POOL UNIT - TYPE 1**

Gross Floor Area: 73.06m<sup>2</sup>

# 1 Bedroom Pool

**TYPE 2**

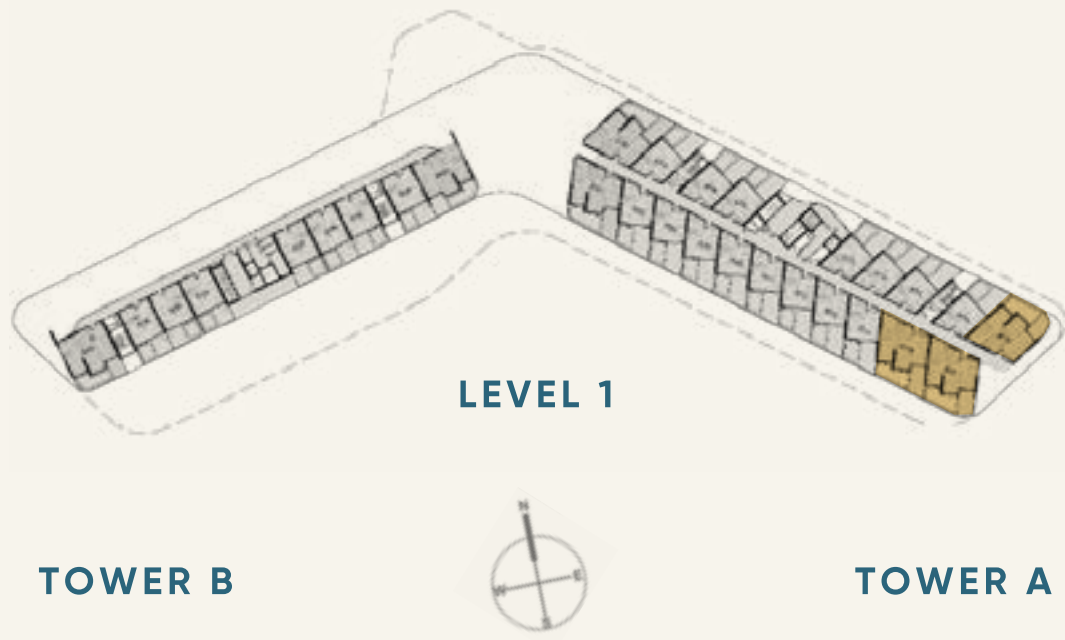


**1 BEDROOM POOL UNIT - TYPE 2**

Gross Floor Area: 66.49m<sup>2</sup>

# 2 Bedroom Pool

TYPE 1

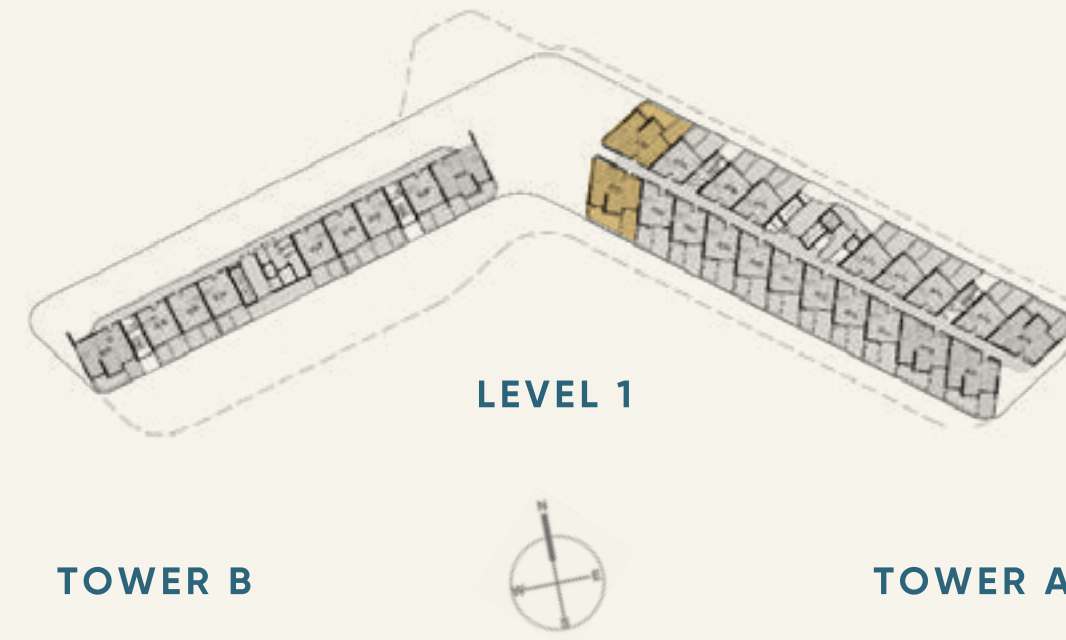


## 2 BEDROOM POOL UNIT - TYPE 1

Gross Floor Area: 108.35m<sup>2</sup>

# 2 Bedroom Pool

TYPE 2



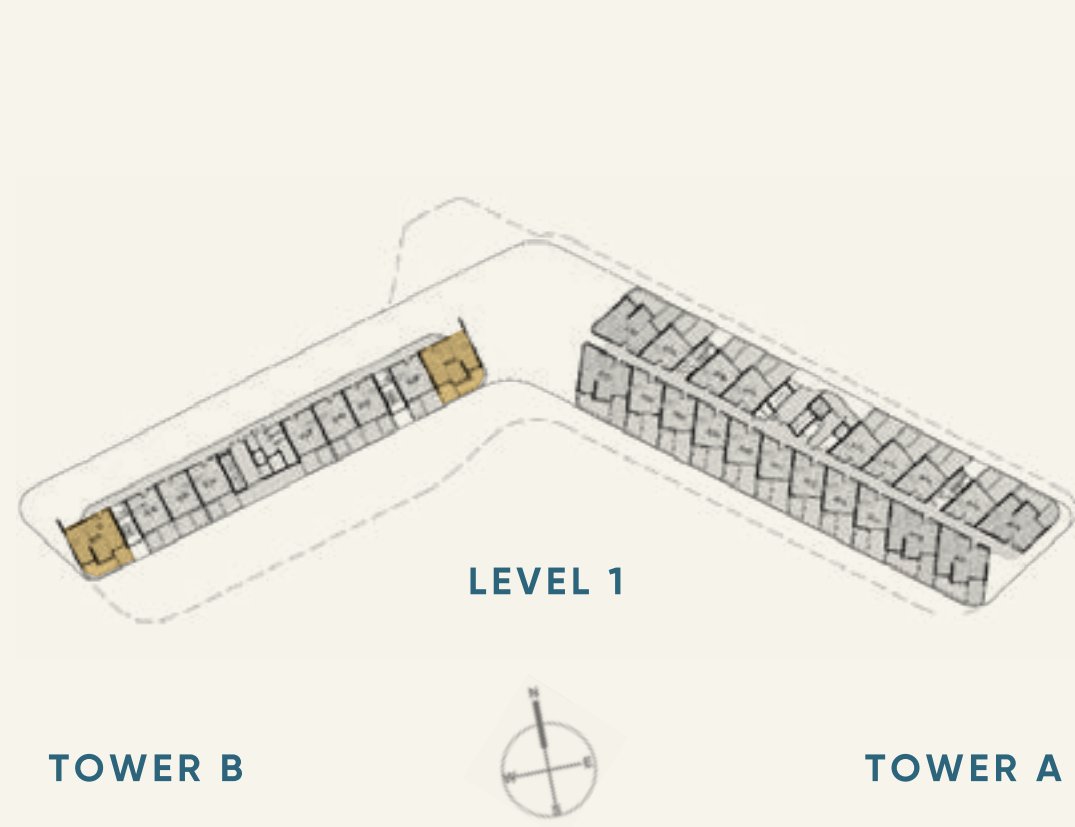
## 2 BEDROOM POOL UNIT - TYPE 2

Gross Floor Area: 111.15m<sup>2</sup>



# 2 Bedroom Pool

TYPE 3



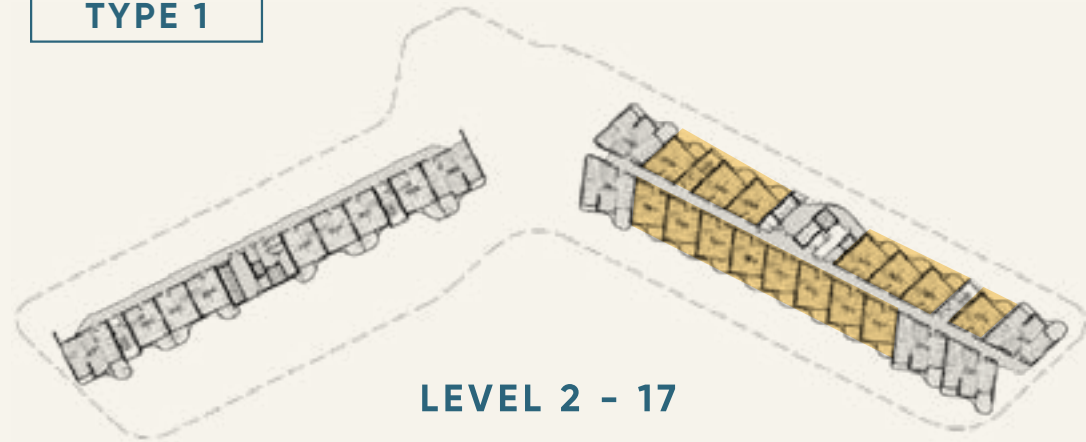
## 2 BEDROOM POOL UNIT - TYPE 3

Gross Floor Area: 100.20m<sup>2</sup>



# 1 Bedroom

TYPE 1



TOWER B

TOWER A



## 1 BEDROOM UNIT - TYPE 1

Gross Floor Area: 51.45m<sup>2</sup>



# 1 Bedroom

TYPE 2



TOWER B

TOWER A



## 2 BEDROOM UNIT - TYPE 2

Gross Floor Area: 52.74m<sup>2</sup>





# 2 Bedroom

**TYPE 1**



**TOWER B**

**TOWER A**



**LEVEL 18**

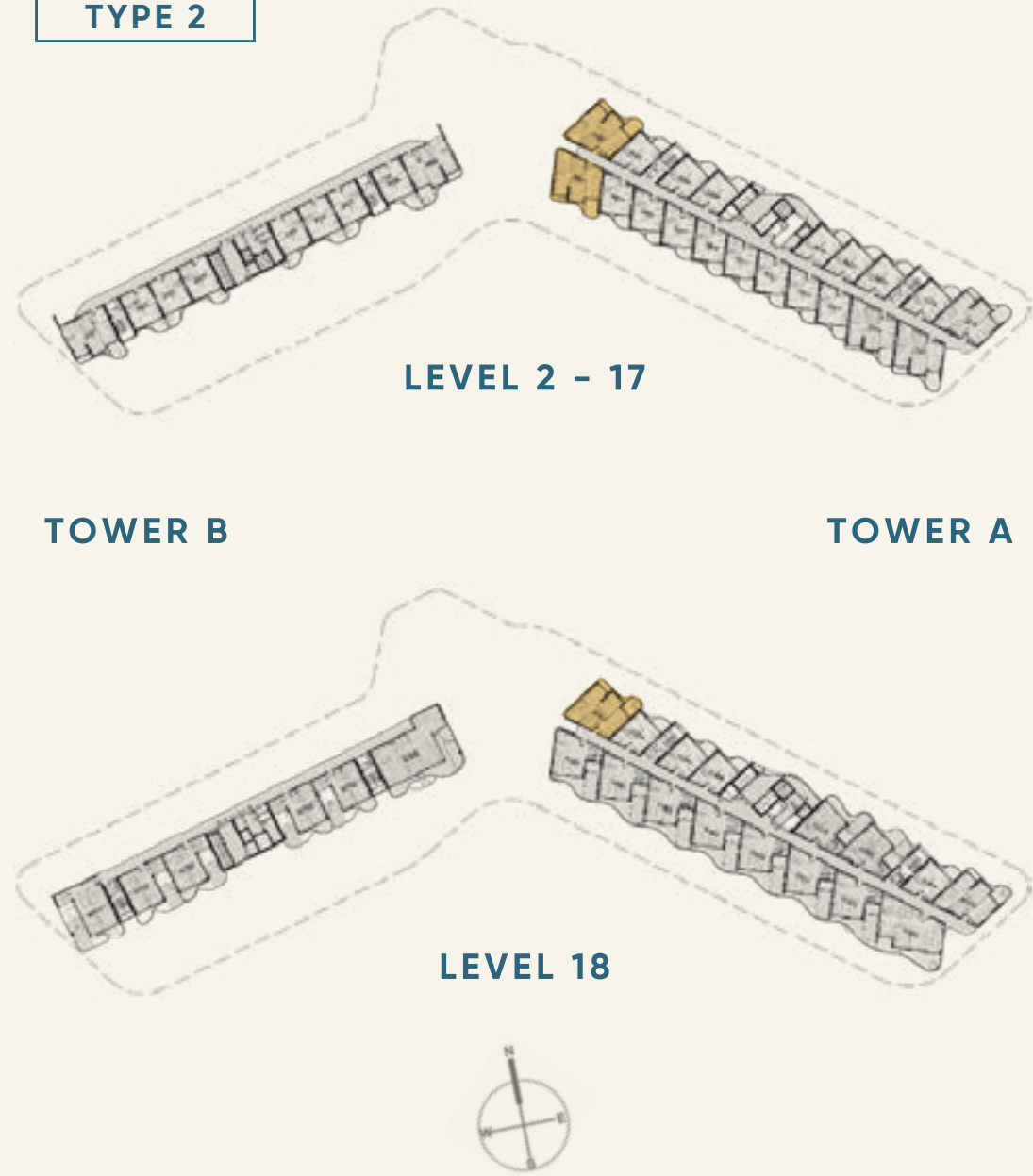


**2 BEDROOM UNIT - TYPE 1**

Gross Floor Area: 89.08m<sup>2</sup>

# 2 Bedroom

TYPE 2

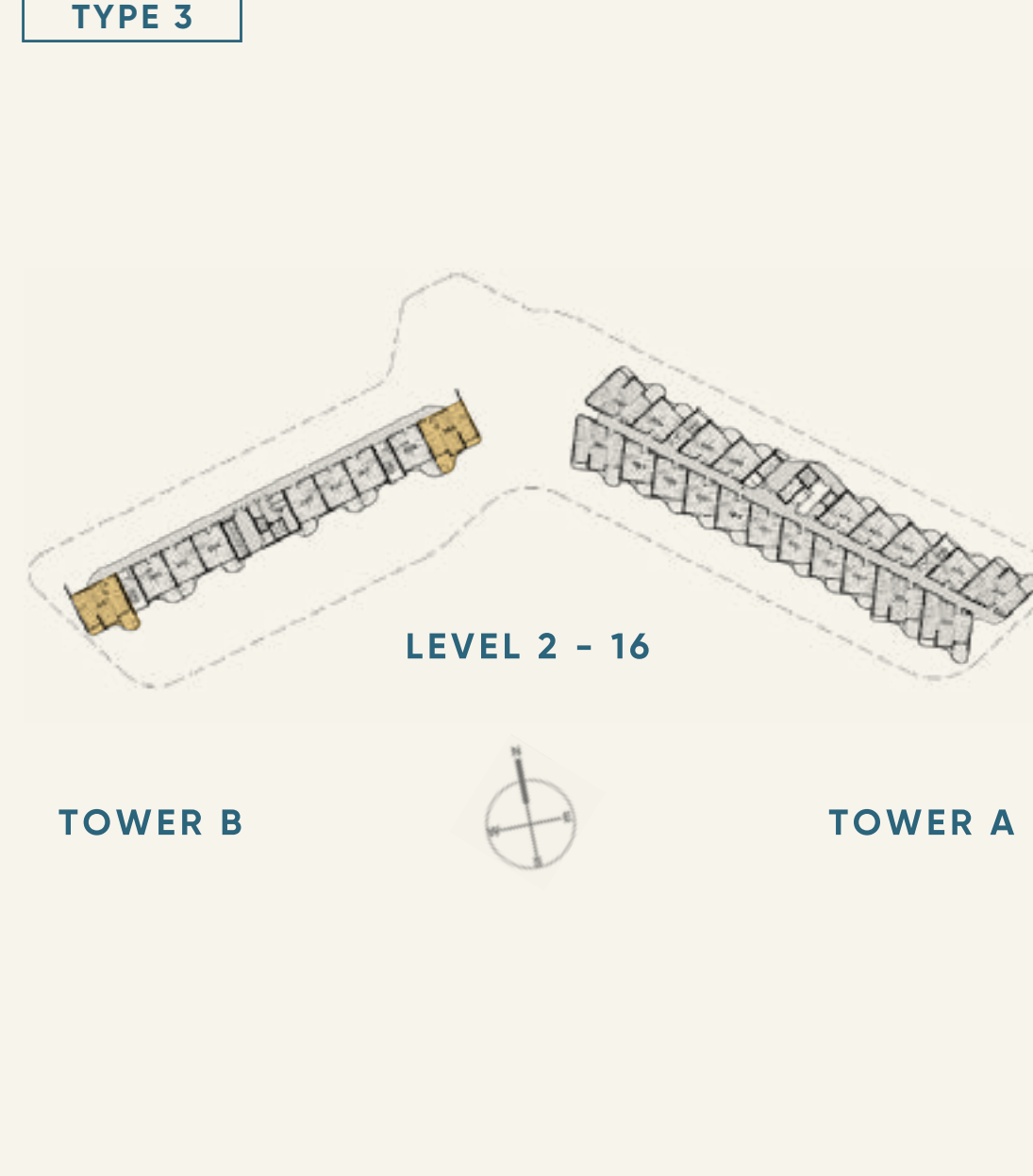


## 2 BEDROOM UNIT - TYPE 2

Gross Floor Area: 89.29m<sup>2</sup>

# 2 Bedroom

TYPE 3

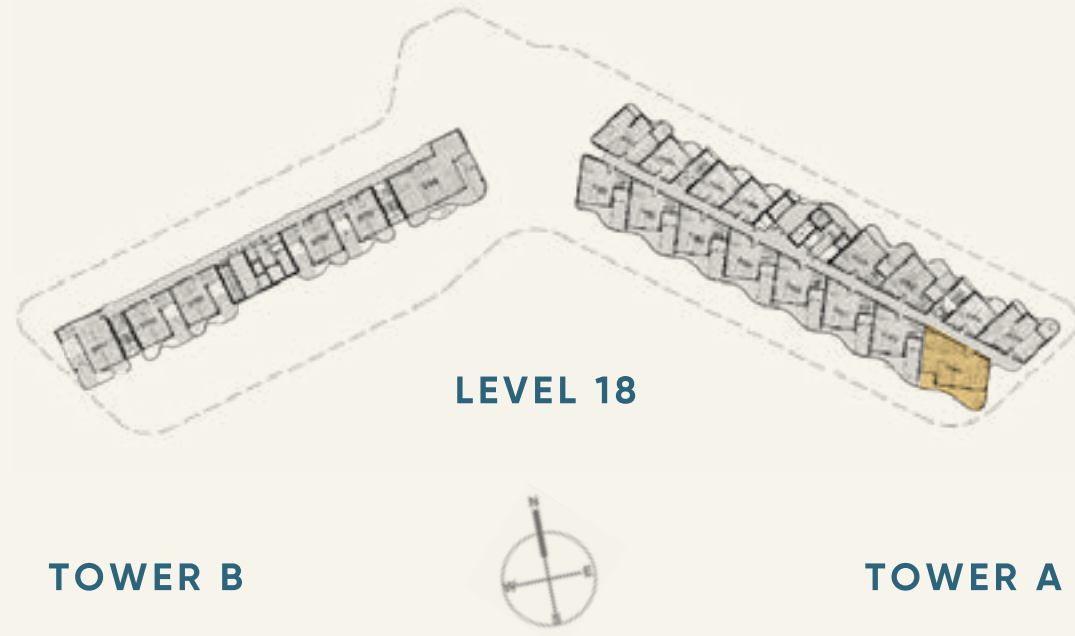


## 2 BEDROOM UNIT - TYPE 3

Gross Floor Area: 87.01m<sup>2</sup>

# 2 Bedroom

TYPE 4

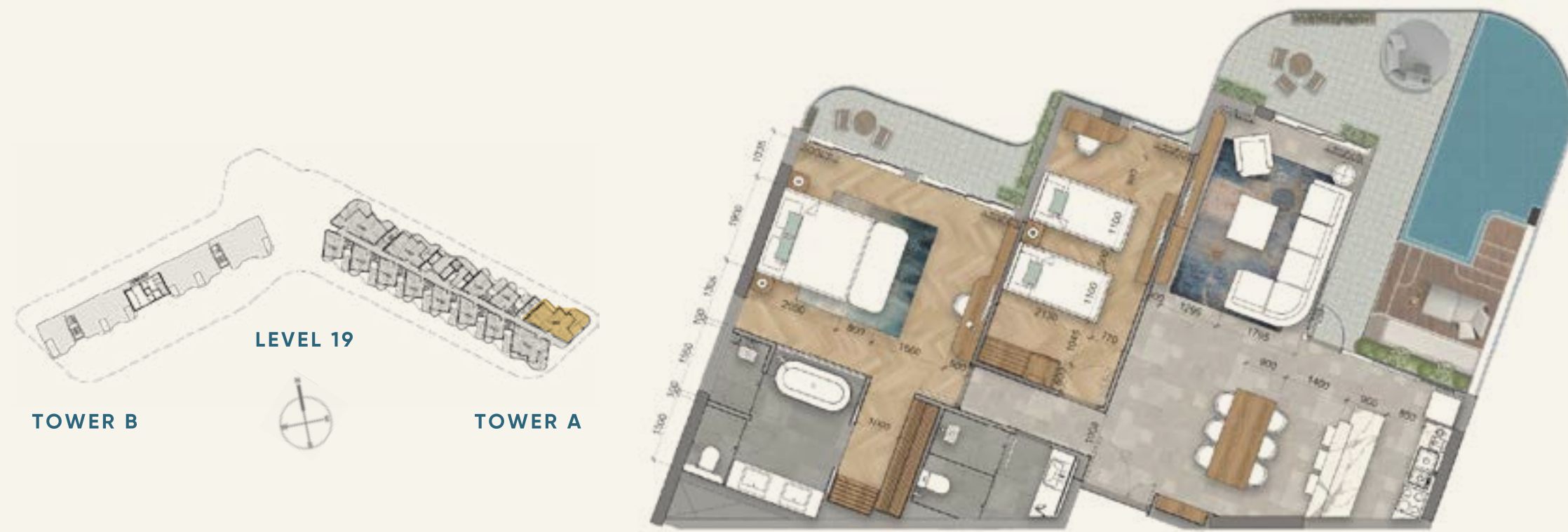


## 2 BEDROOM UNIT - TYPE 4

Gross Floor Area: 126.45m<sup>2</sup>

# Penthouse

TYPE 1

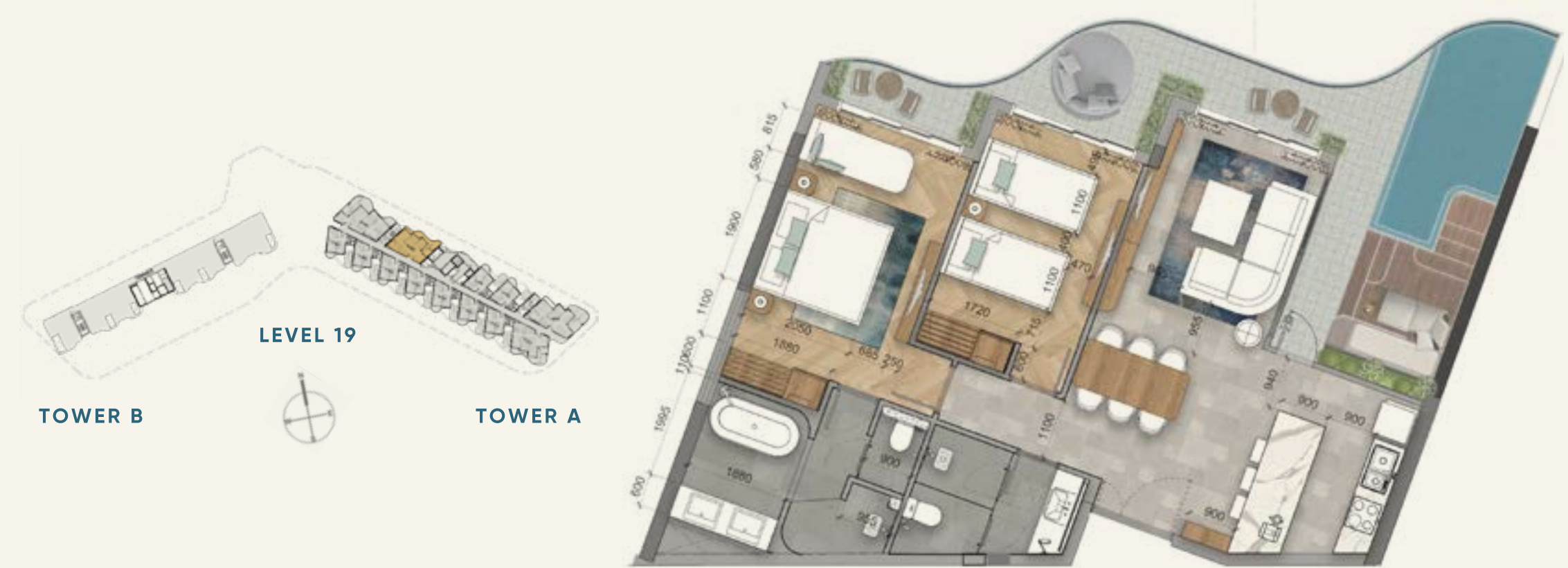


## PENTHOUSE UNIT - TYPE 1

Gross Floor Area: 162.34m<sup>2</sup>

# Penthouse

TYPE 2

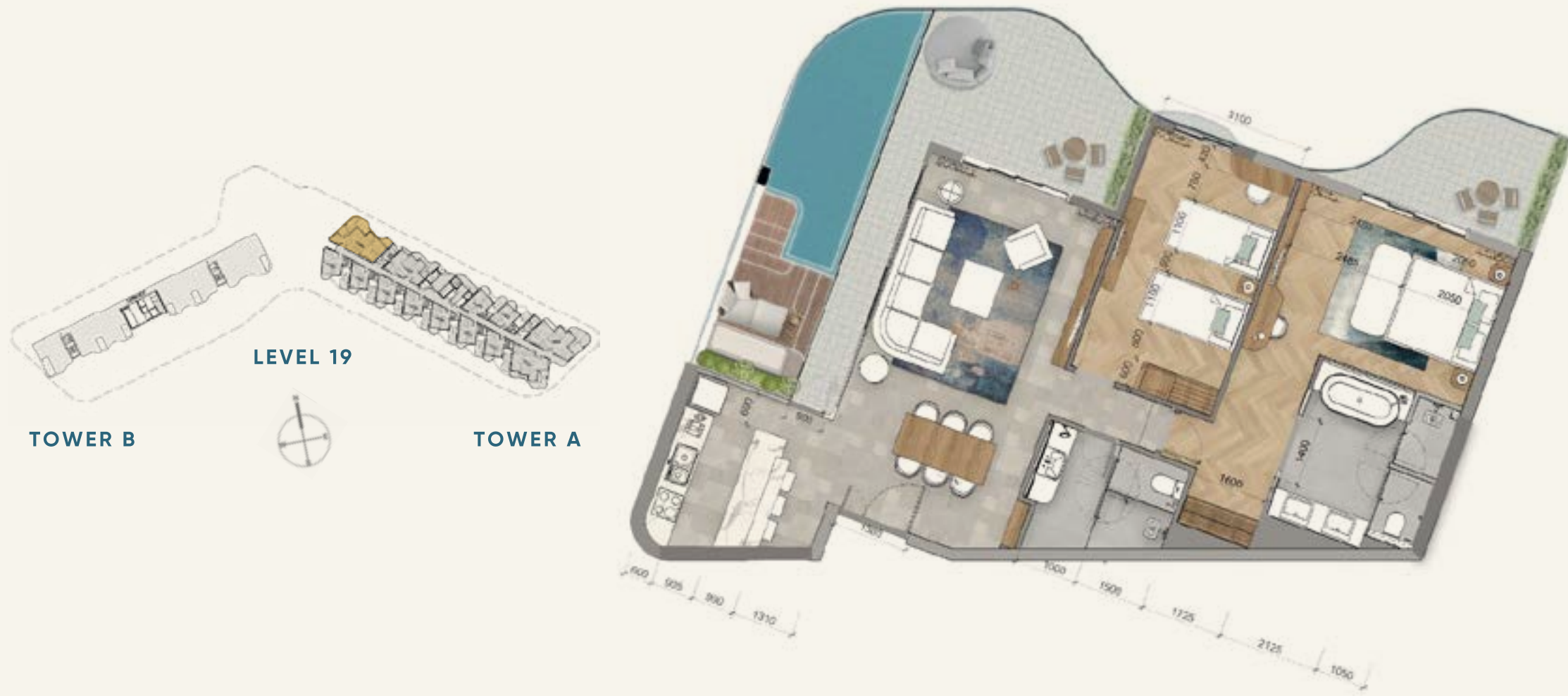


## PENTHOUSE UNIT - TYPE 2

Gross Floor Area: 120.46m<sup>2</sup>

# Penthouse

TYPE 3

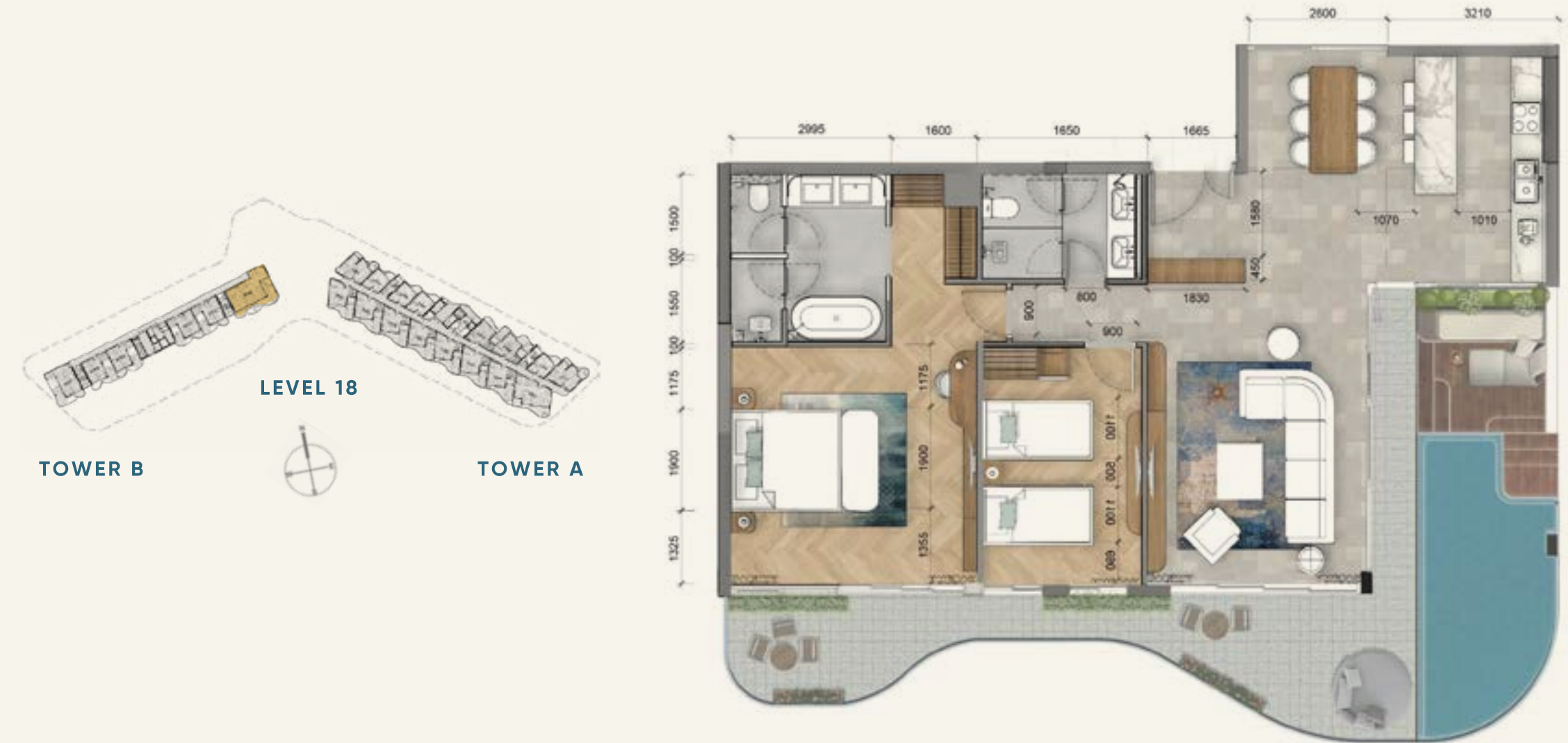


## PENTHOUSE UNIT - TYPE 3

Gross Floor Area: 162.68m<sup>2</sup>

# Penthouse

TYPE 4



## PENTHOUSE UNIT - TYPE 4

Gross Floor Area: 167.18m<sup>2</sup>

# Penthouse

TYPE 5



## PENTHOUSE UNIT - TYPE 5

Gross Floor Area: 129.19m<sup>2</sup>





# Duplex Penthouse

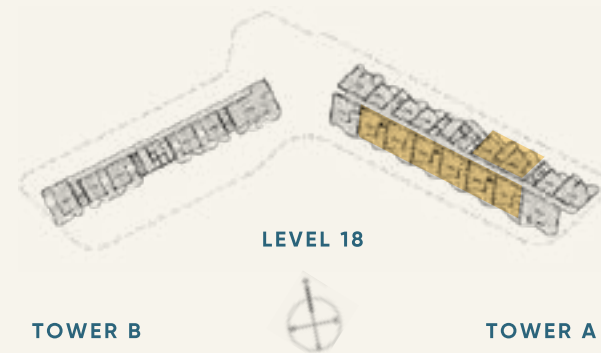
TYPE 1



LEVEL 18



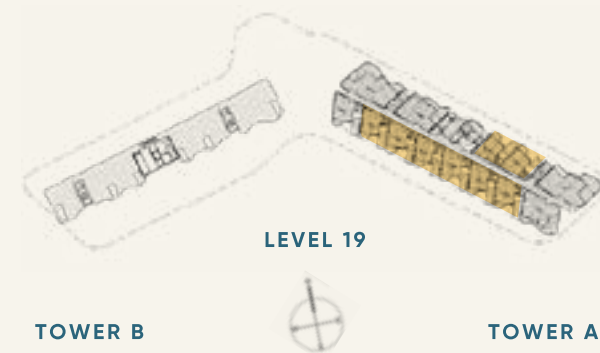
LEVEL 19



LEVEL 18

TOWER B

TOWER A



LEVEL 19

TOWER B

TOWER A

## DUPLEX PENTHOUSE UNIT - TYPE 1

Gross Floor Area: 158.15m<sup>2</sup>

# Duplex Penthouse

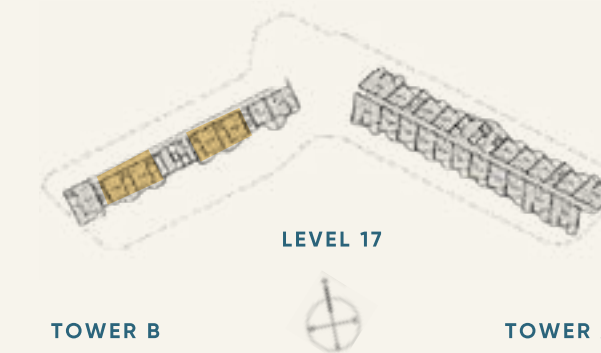
TYPE 2



LEVEL 17



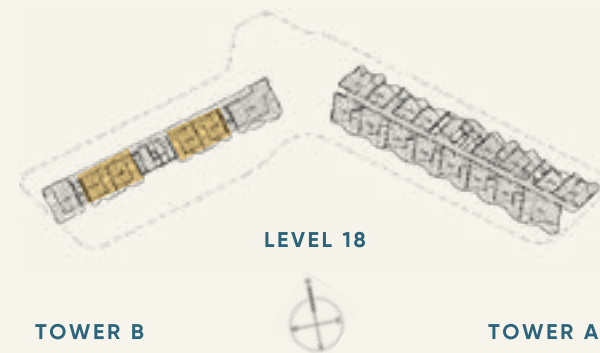
LEVEL 18



LEVEL 17

TOWER B

TOWER A



LEVEL 18

TOWER B

TOWER A

## DUPLEX PENTHOUSE UNIT - TYPE 2

Gross Floor Area: 152.99m<sup>2</sup>

# Duplex Penthouse

TYPE 3



LEVEL 17

## DUPLEX PENTHOUSE UNIT - TYPE 3

Gross Floor Area: 192.37m<sup>2</sup>



LEVEL 17

TOWER B

TOWER A



LEVEL 18



LEVEL 18

TOWER B

TOWER A

# Duplex Penthouse

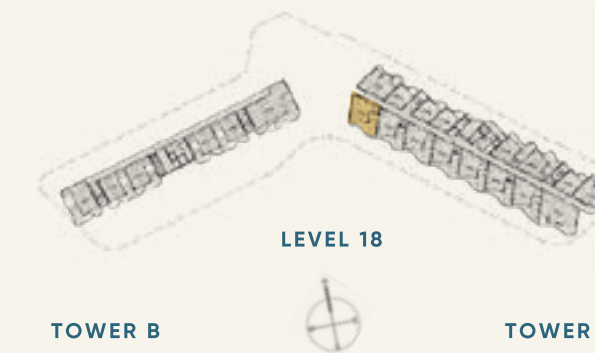
TYPE 4



LEVEL 18

## DUPLEX PENTHOUSE UNIT - TYPE 4

Gross Floor Area: 159.84m<sup>2</sup>



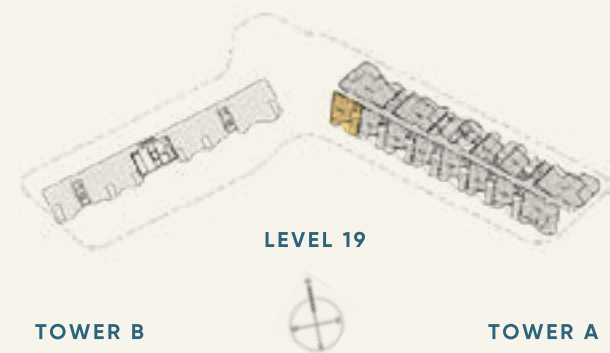
LEVEL 18

TOWER B

TOWER A



LEVEL 19



LEVEL 19

TOWER B

TOWER A



Artist's Impression



Artist's Impression

# Sea Villa

TYPE 1A



LEVEL 1



LEVEL 2



## SEA VILLA - TYPE 1A

Land Area:	from 350.6m <sup>2</sup> to 412.5m <sup>2</sup>
Gross Floor Area:	246.3m <sup>2</sup>
Gross Floor Area & Open Deck and Balcony:	from 415.5m <sup>2</sup> to 431.1m <sup>2</sup>

# Sunrise Villa

TYPE 1A



LEVEL 1



LEVEL 2



## SUNRISE VILLA - TYPE 1A

Land Area:	from 343.6m <sup>2</sup> to 360m <sup>2</sup>
Gross Floor Area:	246.3m <sup>2</sup>
Gross Floor Area & Open Deck and Balcony:	from 400.5m <sup>2</sup> to 417.5m <sup>2</sup>

# Sunrise Villa

TYPE 3A



## SUNRISE VILLA - TYPE 3A

Land Area:	from 351.1m <sup>2</sup> to 355m <sup>2</sup>
Gross Floor Area:	150.1m <sup>2</sup>
Gross Floor Area & Open Deck and Balcony:	257.1m <sup>2</sup>

# Sunrise Villa

TYPE 3B



## SUNRISE VILLA - TYPE 3B

Land Area:	296m <sup>2</sup>
Gross Floor Area:	151.4m <sup>2</sup>
Gross Floor Area & Open Deck and Balcony:	221.7m <sup>2</sup>

# Sunrise Villa

TYPE 3C



## SUNRISE VILLA - TYPE 3C

Land Area:	311m <sup>2</sup>
Gross Floor Area:	134.8m <sup>2</sup>
Gross Floor Area & Open Deck and Balcony:	228.5m <sup>2</sup>



# Beachview Villa

TYPE 2A



LEVEL 1



LEVEL 2



## BEACHVIEW VILLA - TYPE 2A

Land Area:	from 315.2m <sup>2</sup> to 355.4m <sup>2</sup>
Gross Floor Area:	217.3m <sup>2</sup>
Gross Floor Area & Open Deck and Balcony:	from 344.5m <sup>2</sup> to 376.3m <sup>2</sup>



# Beachfront Villa

TYPE 4



## BEACHFRONT VILLA - TYPE 4

Land Area:	from 522m <sup>2</sup> to 558.8m <sup>2</sup>
Gross Floor Area:	287.8m <sup>2</sup>
Gross Floor Area & Open Deck and Balcony:	from 503.4m <sup>2</sup> to 526.8m <sup>2</sup>





Phuoc Thuan, Xuyen Moc, Ba Ria - Vung Tau, Vietnam

---

The information and images in this document are intended as an introduction to the general content of the project only and interested parties should rely on their own enquiries. The developer, its officers, employees, agents and related body corporate organisations expressly disclaim any liability and responsibility (except to the extent that liability under statute or by operation of law cannot be excluded) to any person for any loss, liability, damage or expense arising directly or indirectly from or connected in any way with any use of or reliance on the information contained within this document. All computer generated images in this document are artist's impressions only and the final form of the project is subject to change.